



Harken-Reidar
training • sales • service
civil, survey, and construction

**Authorized Bentley
Channel Partner**

**Our Registered Engineers
Know Water, Sewer & Storm.
We have used Haestad for
over 20 years!**

**Contact us for all of your
Haestad Methods needs,
Products, Sales & Training.**

540-635-6742
www.harken-reidar.com
info@harken-reidar.com



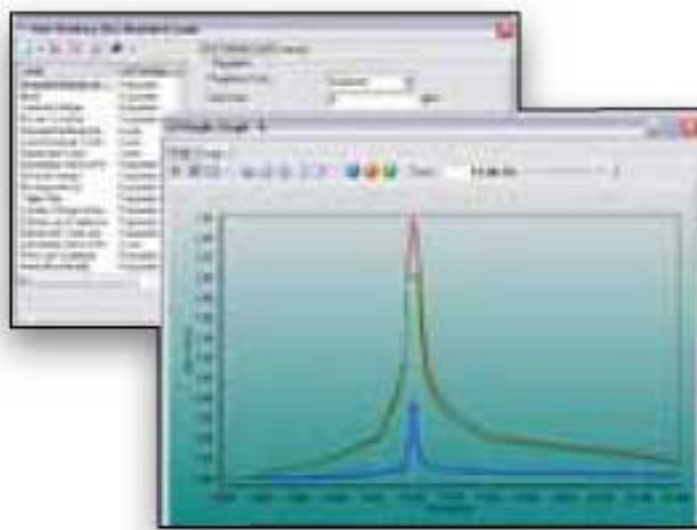
SEWERGEMS®

URBAN SANITARY AND COMBINED SEWER MODELING

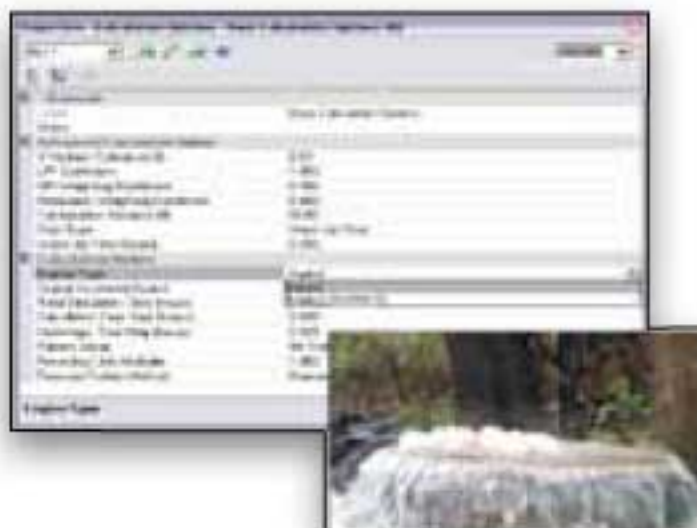
From urban sewer planning to overflow remediation analysis, to optimized Best Management Practices designs, SewerGEMS provides an easy-to-use environment for engineers to analyze, design, and operate sanitary or combined conveyance sewer systems, using built-in hydraulic and hydrology tools and a variety of wet-weather calibration methods.



Create models easily using your choice of the standalone, MicroStation, ArcGIS, or AutoCAD platforms



SewerGEMS provides a broad range of tools for estimating and allocating sewer loadings



SewerGEMS' full dynamic engine allows to evaluate systems for surcharges and overflows

One product. One model file. Four included platforms.

Users of SewerGEMS enjoy the power and versatility afforded by working across CAD, GIS, and stand-alone platforms while accessing a single, shared, project data source. With SewerGEMS, utilities and consultants have built-in support for four interoperable platforms, all packaged together in a single product:

- Windows stand-alone for ease of use, accessibility, and performance,
- ArcGIS for GIS integration, thematic mapping, and publishing
- MicroStation® for bridging geospatial planning and engineering design environments, and
- AutoCAD for convenient CAD layout and drafting

Utilities and consultants can share a single dataset using different interfaces, and modeling teams can leverage the skills of engineers from different departments. Engineers can flatten learning curves by choosing the environment they already know and provide results that can be visualized on multiple platforms.

ArcGIS integration and geospatial model-building

The ArcGIS interface in SewerGEMS allows GIS professionals to leverage ESRI's geodatabase architecture to guarantee a single dataset for modeling and GIS. They can create, edit, calculate, and visualize SewerGEMS models directly from ArcMap with full access to every hydraulic and hydrology modeling tool.

Engineers can leverage geospatial data, CAD drawings, databases, and spreadsheets to jumpstart the model building process. SewerGEMS provides synchronized database connections, geospatial links, and advanced model-building modules that connect with virtually any digital data format. SewerGEMS also provides drawing and connectivity review tools to guarantee a hydraulically coherent model.

Comprehensive scenario management

With SewerGEMS scenario management center, users can configure, evaluate, visualize, and compare an unlimited number of scenarios within a single file. Engineers can evaluate design, operational, sanitary loading and even network topology strategies for better decision-making support.

Wastewater and stormwater loading allocation and estimation

The included LoadBuilder™ module helps modelers allocate sewer loads based on a variety of GIS-based sources such as customer water use billing data, area-wide flow measurement or polygons with known population or land use.

Sewer loading can also be applied as user-defined hydrographs, pattern-based loads, and unit loads. Engineers can access and customize the comprehensive unit (dry weather) load engineering library with numerous typical unit loads based on population, area, count, and discharge. SewerGEMS also allows users to input and save an unlimited number of flow patterns, to accurately model flow changes over the course of a day.

Engineers can also load models with wet weather runoff flows derived from precipitation, using SewerGEMS built-in rainfall distributions, or user-defined rainfall events. Runoff flows are modeled and calibrated using a choice of hydrograph methods, including RTK, SCS, Modified Rational, EPA-SWMM, or user-defined generic unit hydrographs.

Dual dynamic engines

The two dynamic engines of SewerGEMS account for storage effects within structures and quantify overflows should they occur. The flexibility of choosing between the EPA-SWMM engine and an extremely fast, stable implicit engine to solve the complete set of wave components behind the Saint Venant equations gives added comfort to those modelers that are accustomed to modeling with SWMM and familiar with its capabilities and limitations.

SEWERGEMS SYSTEM REQUIREMENTS

Processor:

Pentium: IV or Athlon XP – 2+ GHz

Operating System:

Windows Vista, Windows XP, and Windows Server 2003

Memory:

512 MB or more

Hard Disk:

500 MB of free storage space (or more depending on data files)

Display:

1280 x 1024 or better resolution at 256 colors or more, 64 megabyte graphics card or better

Platform pre-requirements:

Stand-alone: none; ArcGIS: 9.3; MicroStation: V8i; AutoCAD: 2009

Support for older platform software versions is available if required. Contact your Bentley representative for details.

ABOUT BENTLEY

Bentley Systems, Incorporated is the global leader dedicated to providing comprehensive software solutions for sustaining infrastructure. Architects, engineers, constructors, and owner-operators are indispensable in improving our world and our quality of life; the company's mission is to improve the performance of their projects and of the assets they design, build, and operate. Bentley sustains the infrastructure professions by helping to leverage information technology, learning, best practices, and global collaboration – and by promoting careers devoted to this crucial work.

About Harken-Reidar

Harken-Reidar, Inc. is a Bentley Channel Partner for the Mid-Atlantic VA, MD, DC & PA. Our sales and training staff are Registered Professional engineers who understand Civil design and plans preparation. We have 20 years of experience using GeoPak, InRoads, MicroStation and Haestad Methods software for over 20 years.

Contact Harken-Reidar, your local Bentley dealer, integration and training center.

Corporate office: 1105 N. Royal Avenue
Front Royal, VA 22630

Offices: Pittsburgh, 130 Venango Ct.
New Kensington, PA 15068

Houston, 2201 Fountain View #F38
Houston, TX 77057

T: 540-635-6742 F: 540-635-6752
info@harken-reidar.com



SEWERGEMS AT-A-GLANCE

Interface and graphical editing

- Stand-alone Windows interface included
- ArcGIS-based interface (ArcMap) included
- MicroStation-based interface included
- AutoCAD-based interface included
- Unlimited undo and redo
- Element morphing, splitting, and reconnection
- Automatic element labeling
- Scaled, schematic, and hybrid environments
- Element prototypes
- Dynamic zooming
- Multiple background file support
- Image, CAD, and GIS background layer support

Interoperability and data connections

- Single set of model files for four compatible interfaces
- Bidirectional synchronized connections
- Shapefile, Geodatabase, Geometric Network and SDE support
- Polyline-to-pipe conversion from DXF and DWG files
- Spreadsheet, database, Shapefile, and ODBC connections

Hydraulics and operations

- Two engines for solving the full set of St. Venant equations included
- Implicit dynamic engine included
- Explicit dynamic engine included (EPA-SWMM)
- Evaporation definition
- Aquifer simulation
- Pollution analysis with optional definition of land use categories and land surface characteristics

- Treatment analysis
- Rule-based controls
- Variable-speed pumping

Results presentation

- Direct ArcMap visualization and mapping
- Thematic mapping
- Dynamic, multi-parameter, and multi-scenario graphing
- Advanced dynamic profiling
- Advanced tabular reporting with FlexTables®
- Property-based color coding and symbology
- Property-based annotation

Model building

- Polyline-to-pipe conversion from DXF and DWG files
- Spreadsheet, database, shapefile, and ODBC connections

Model management

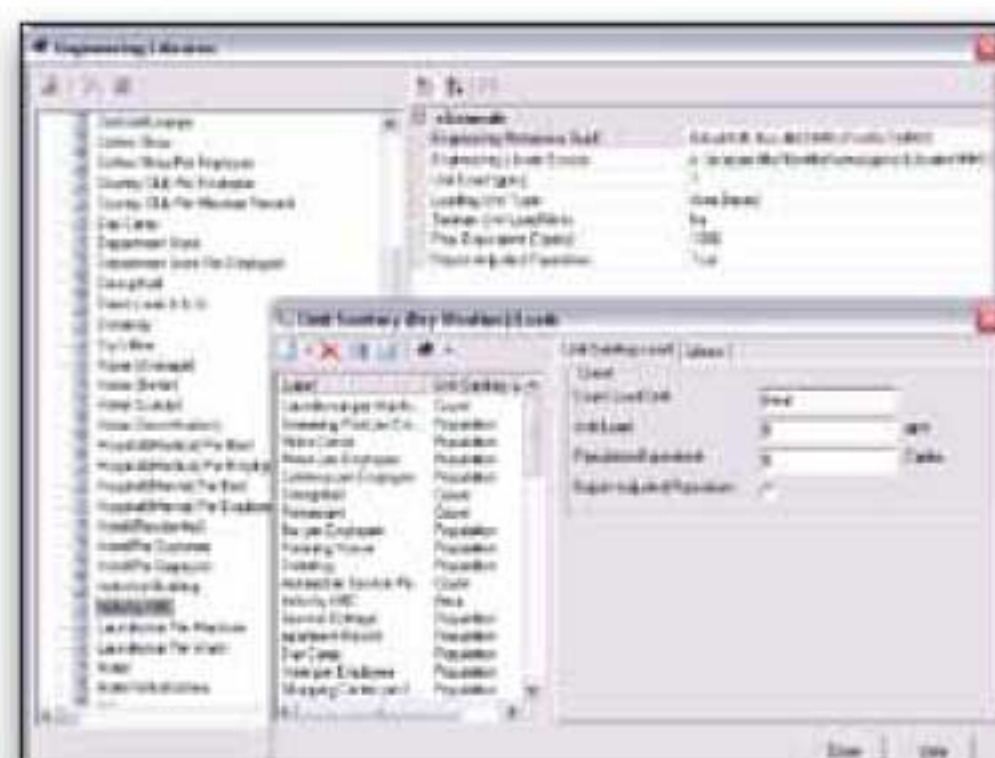
- Unlimited scenarios and alternatives
- Comprehensive scenario management
- Tabular reports global editing
- Sorting and persistent filtering on tabular reports
- Statistical analysis from tabular reports
- Customizable engineering libraries
- Dynamic and static selection sets
- Global engineering-units management
- Drawing review tools for connectivity consistency
- Automatic topology review
- Orphaned node and dead-end pipe queries
- ProjectWise® XM / ProjectWise® Geospatial Management support

Sanitary load allocation and estimation

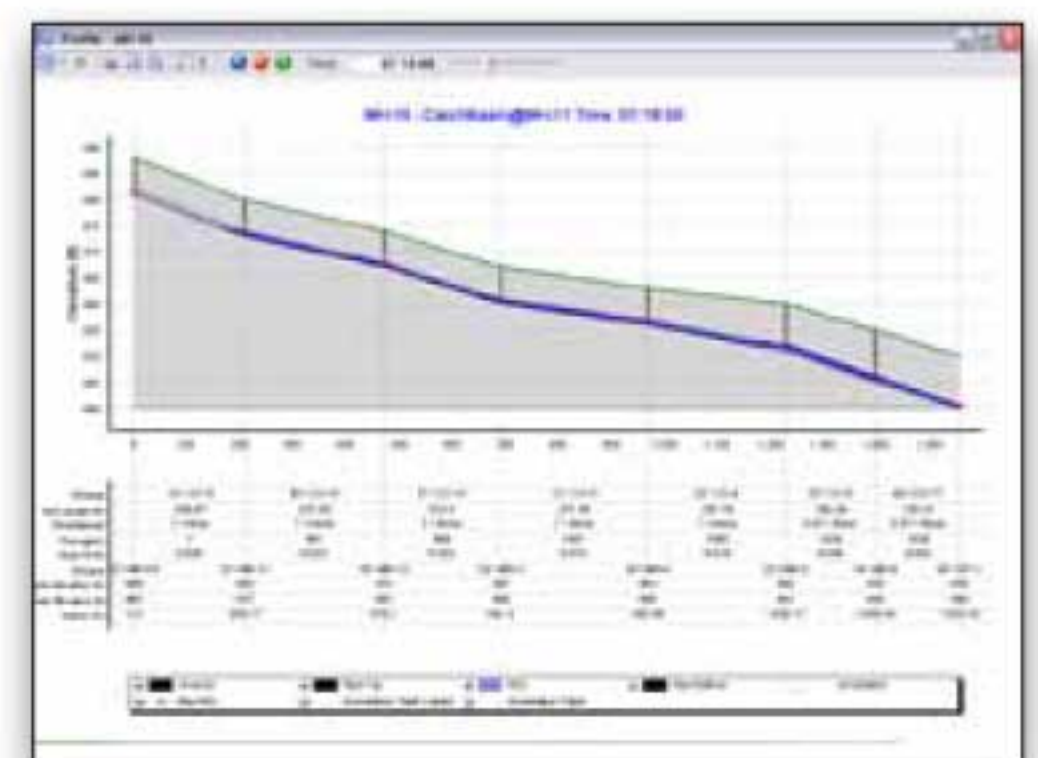
- Automatic sanitary load allocation from geospatial data
- Geospatial load allocation from billing meters
- Load allocation using flow monitoring distribution
- Land use-based load distribution
- Sewer load assignment based on phased land use projections and population projections
- Dry-weather load assignment using hydrographs, unit loads, and pattern-based loads
- Customizable area-, count-, discharge-, and population-based unit sanitary loading library
- Inflow and infiltration calibration using RTK tables

Stormwater load allocation and estimation

- Infiltration and runoff methods: SCS Runoff, CN with automatic CN weighting, Loss, Green and Ampt, Horton (User Defined), EPA SWMM Runoff
- Time of concentration methods: User-Defined, Carter, Eagleson, Espey/Winslow, Federal Aviation Agency, Kerby/Hathaway, Kirpich (PA and TN), Length and Velocity, SCS Lag, TR-55 Sheet Flow, TR-55 Shallow Concentrated Flow, and TR-55 Channel Flow
- Hydrograph methods: Generic unit hydrograph, RTK, SCS, EPA SWMM, and Modified Rational



Manage your sanitary load data from totally customizable unit load libraries



Locate overflows quickly using thematic mapping, FlexTables, and dynamic profiles